



SOLD \$150,000



SOLD \$6,600

MORPHY

AUCTIONS

DECEMBER 5, 2014  
OVER \$600,460



SOLD \$4,200



SOLD \$5,100



SOLD \$15,600



SOLD \$2,400



SOLD \$7,200



SOLD \$6,000



SOLD \$4,800



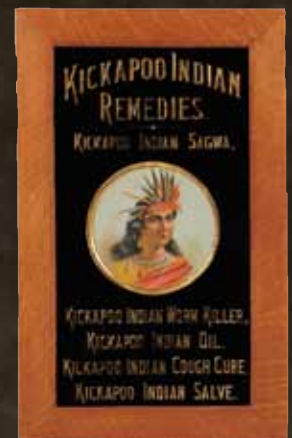
SOLD \$22,800



SOLD \$40,800



SOLD \$21,600



SOLD \$6,000

**PRICES\* REALIZED AT MORPHY AUCTIONS December 5, 2014**

\* Prices include a 20% buyers premium. No sales tax included.

1	\$660	52	\$510	113	\$180	166	\$1,320	220	\$180
2	\$330	53	\$840	114	\$1,140	167	\$300	221	\$90
3	\$390	54	\$360	115	\$840	168	\$300	222	\$120
4	\$330	55	\$150	116	\$900	169	\$1,080	223	\$1,080
5	\$450	56	\$360	117	\$90	170	\$330	224	\$270
6	\$540	57	\$450	118	\$150	171	\$330	225	\$90
7	\$270	58	\$330	119	\$960	172	\$720	226	\$270
8	\$1,140	59	\$270	120	\$1,020	173	\$240	227	\$780
9	\$360	60	\$240	121	\$180	174	\$660	228	\$390
10	\$300	61	\$120	122	\$120	175	\$480	229	\$120
11	\$330	62	\$300	123	\$540	176	\$210	230	\$90
12	\$1,200	63	\$330	124	\$600	177	\$180	231	\$180
13	\$420	64	\$300	125	\$240	178	\$300	232	\$270
15	\$4,200	65	\$1,140	126	\$330	179	\$180	233	\$570
16	\$540	66	\$330	127	\$180	180	\$570	234	\$60
17	\$420	67	\$1,680	128	\$180	181	\$210	235	\$1,080
18	\$300	68	\$2,700	129	\$180	183	\$420	236	\$720
19	\$600	69	\$60	130	\$270	184	\$30	237	\$420
20	\$480	75	\$900	131	\$660	185	\$240	238	\$600
21	\$390	77	\$720	132	\$1,200	186	\$300	239	\$480
22	\$960	78	\$660	133	\$300	187	\$210	240	\$300
23	\$300	79	\$5,400	134	\$180	189	\$270	241	\$1,560
24	\$360	80	\$1,320	135	\$120	190	\$150	242	\$2,160
25	\$720	81	\$1,800	136	\$150	191	\$120	243	\$90
26	\$420	82	\$6,600	137	\$840	192	\$300	244	\$180
27	\$390	83	\$3,000	138	\$300	193	\$1,140	245	\$60
28	\$600	84	\$840	139	\$390	194	\$210	246	\$330
29	\$660	85	\$1,020	140	\$420	195	\$660	247	\$60
30	\$780	86	\$120	141	\$840	196	\$270	248	\$240
30A	\$60	87	\$90	142	\$420	197	\$270	249	\$450
31	\$570	89	\$150	143	\$330	198	\$210	250	\$300
32	\$1,440	90	\$1,200	144	\$480	199	\$240	251	\$2,400
33	\$600	91	\$5,100	145	\$390	200	\$240	252	\$180
34	\$1,080	92	\$180	146	\$480	201	\$720	253	\$150
35	\$960	93	\$180	148	\$300	202	\$210	254	\$120
36	\$720	95	\$120	149	\$180	203	\$480	255	\$60
37	\$900	96	\$90	150	\$270	204	\$420	256	\$270
38	\$390	97	\$210	151	\$960	205	\$390	257	\$3,300
39	\$1,080	98	\$90	152	\$900	206	\$180	258	\$840
40	\$510	99	\$90	153	\$720	207	\$180	259	\$600
41	\$390	100	\$120	154	\$900	208	\$300	260	\$60
42	\$240	101	\$150	155	\$240	209	\$300	263	\$270
43	\$420	102	\$210	156	\$420	210	\$390	264	\$1,200
44	\$30	103	\$360	157	\$300	211	\$450	264A	\$210
45	\$510	104	\$90	158	\$360	212	\$360	265	\$2,400
46	\$660	105	\$210	159	\$240	213	\$300	266	\$480
47	\$540	106	\$90	160	\$300	214	\$420	267	\$210
48	\$360	107	\$90	161	\$1,320	215	\$90	268	\$960
49	\$420	108	\$270	162	\$300	216	\$30	269	\$330
50	\$480	110	\$120	163	\$570	217	\$150	270	\$780
51	\$450	111	\$150	164	\$780	218	\$540	271	\$90
		112	\$180	165	\$1,440	219	\$450	272	\$180

**PRICES\* REALIZED AT MORPHY AUCTIONS December 5, 2014**

\* Prices include a 20% buyers premium. No sales tax included.

274	\$270	328	\$480	390	\$300	443	\$210	504	\$240
275	\$150	329	\$1,680	391	\$570	444	\$390	506	\$3,000
276	\$420	330	\$210	392	\$1,680	445	\$240	507	\$40,800
277	\$90	331	\$360	393	\$390	446	\$1,440	508	\$2,040
278	\$180	332	\$270	394	\$900	447	\$420	509	\$4,800
279	\$120	333	\$660	395	\$540	448	\$150	510	\$4,800
280	\$600	335	\$120	396	\$960	449	\$72	511	\$1,200
281	\$510	336	\$300	397	\$390	450	\$240	512	\$180
282	\$210	337	\$150	398	\$540	451	\$150	513	\$1,680
283	\$210	338	\$180	399	\$1,680	452	\$90	515	\$1,140
284	\$240	339	\$300	400	\$960	454	\$1,200	516	\$2,040
285	\$210	340	\$1,020	401	\$660	455	\$720	517	\$960
286	\$600	341	\$120	402	\$780	456	\$450	518	\$330
287	\$1,440	342	\$90	403	\$1,440	457	\$660	519	\$960
288	\$600	343	\$510	404	\$960	458	\$570	520	\$720
290	\$5,700	344	\$360	405	\$720	459	\$1,140	521	\$510
291	\$3,300	345	\$780	406	\$570	460	\$510	522	\$1,140
292	\$1,200	347	\$420	407	\$960	461	\$540	523	\$1,140
293	\$2,160	348	\$960	408	\$1,020	462	\$450	524	\$6,000
294	\$1,800	353	\$900	409	\$330	463	\$60	525	\$1,200
295	\$1,320	354	\$390	410	\$330	464	\$60	526	\$240
296	\$660	355	\$330	411	\$720	465	\$150	527	\$330
297	\$3,900	356	\$1,080	412	\$780	466	\$120	528	\$2,280
298	\$480	357	\$960	413	\$330	467	\$390	530	\$540
299	\$300	358	\$1,560	414	\$360	468	\$270	531	\$2,700
300	\$720	359	\$1,320	415	\$1,440	469	\$210	532	\$570
301	\$6,000	361	\$300	416	\$1,140	470	\$570	533	\$570
302	\$900	363	\$840	417	\$330	472	\$1,440	534	\$660
303	\$180	364	\$1,200	418	\$240	474	\$180	535	\$840
304	\$600	365	\$1,140	419	\$450	477	\$720	536	\$450
306	\$210	366	\$660	420	\$330	478	\$540	537	\$540
307	\$270	367	\$270	421	\$510	479	\$780	538	\$150
308	\$210	369	\$150	423	\$390	480	\$180	539	\$450
309	\$960	370	\$330	424	\$300	481	\$150,000	540	\$600
310	\$420	371	\$450	425	\$240	482	\$21,600	541	\$60
311	\$1,440	372	\$270	426	\$9,000	483	\$1,800	542	\$150
312	\$150	373	\$2,700	427	\$270	484	\$660	543	\$390
313	\$150	374	\$270	428	\$300	485	\$1,200	544	\$840
314	\$480	375	\$330	429	\$390	487	\$960	545	\$150
315	\$180	376	\$390	430	\$1,140	488	\$90	548	\$510
316	\$720	377	\$360	431	\$390	489	\$1,200	549	\$330
317	\$240	378	\$390	432	\$180	490	\$1,440	550	\$270
318	\$510	379	\$360	433	\$240	491	\$510	551	\$420
319	\$90	380	\$660	434	\$180	492	\$360	553	\$180
320	\$150	381	\$420	435	\$180	493	\$390	554	\$120
321	\$570	383	\$540	436	\$150	494	\$360	555	\$60
322	\$660	384	\$22,800	437	\$150	495	\$330	556	\$60
323	\$510	385	\$450	438	\$180	496	\$360	557	\$1,440
324	\$840	386	\$570	439	\$1,560	497	\$960	558	\$840
325	\$60	387	\$840	440	\$390	498	\$300	559	\$3,600
326	\$60	388	\$510	441	\$4,500	499	\$420	560	\$120
327	\$570	389	\$600	442	\$270	500	\$660	561	\$600

**PRICES\* REALIZED AT MORPHY AUCTIONS December 5, 2014**

\* Prices include a 20% buyers premium. No sales tax included.

562	\$510	618	\$660	673	\$270	729	\$60	785	\$780
563	\$240	619	\$90	674	\$840	730	\$90	786	\$2,280
564	\$570	620	\$1,680	675	\$540	732	\$120	787	\$420
565	\$1,440	621	\$540	676	\$480	733	\$120	788	\$210
566	\$1,140	622	\$780	677	\$330	734	\$150	789	\$360
567	\$1,200	623	\$660	678	\$270	735	\$60	790	\$360
568	\$240	624	\$840	679	\$330	736	\$30	791	\$180
569	\$510	625	\$300	681	\$600	737	\$60	792	\$240
570	\$570	626	\$210	682	\$840	738	\$60	795	\$30
571	\$210	627	\$270	683	\$15,600	739	\$600	796	\$30
572	\$1,020	628	\$330	685	\$480	740	\$150	804	\$60
573	\$780	629	\$360	686	\$330	741	\$450		
574	\$660	630	\$360	687	\$360	742	\$300		
575	\$780	632	\$30	688	\$840	743	\$480		
576	\$210	633	\$960	690	\$540	744	\$300		
577	\$240	634	\$150	691	\$720	745	\$1,020		
578	\$90	635	\$5,100	692	\$90	747	\$210		
579	\$180	636	\$180	693	\$1,920	748	\$270		
580	\$150	637	\$450	694	\$4,800	749	\$120		
581	\$240	638	\$270	695	\$840	750	\$90		
582	\$360	639	\$240	696	\$180	751	\$90		
583	\$570	640	\$510	697	\$1,140	752	\$60		
584	\$390	641	\$480	699	\$540	753	\$60		
585	\$510	642	\$2,280	700	\$960	754	\$150		
586	\$60	643	\$1,680	701	\$330	755	\$90		
587	\$120	644	\$420	702	\$90	756	\$60		
588	\$60	645	\$600	703	\$0	757	\$210		
589	\$30	646	\$300	704	\$90	758	\$90		
590	\$30	647	\$180	705	\$840	762	\$90		
591	\$60	648	\$150	706	\$30	763	\$90		
593	\$120	649	\$6,000	707	\$600	764	\$330		
595	\$600	650	\$90	708	\$180	764A	\$390		
596	\$60	651	\$90	709	\$180	765	\$120		
597	\$1,800	652	\$60	710	\$270	766	\$60		
598	\$660	653	\$150	711	\$120	767	\$570		
599	\$600	654	\$90	712	\$330	768	\$240		
600	\$1,560	655	\$510	713	\$60	769	\$60		
601	\$150	656	\$480	714	\$120	770	\$60		
602	\$720	658	\$1,920	715	\$360	771	\$60		
603	\$720	660	\$210	716	\$840	772	\$90		
604	\$1,200	661	\$210	717	\$240	773	\$60		
605	\$180	662	\$600	718	\$330	774	\$270		
606	\$390	663	\$360	719	\$720	775	\$150		
607	\$360	664	\$3,300	720	\$60	776	\$720		
608	\$270	665	\$7,200	721	\$60	777	\$420		
609	\$210	666	\$3,000	722	\$210	778	\$1,800		
610	\$960	667	\$240	723	\$300	779	\$1,080		
611	\$1,320	668	\$720	724	\$30	780	\$720		
613	\$240	669	\$780	725	\$30	781	\$960		
614	\$480	670	\$1,080	726	\$210	782	\$480		
615	\$1,020	671	\$270	727	\$90	783	\$300		
617	\$390	672	\$180	728	\$90	784	\$240		