



SOLD \$14,950

MORPHY

AUCTIONS



SOLD \$5,175

2007 WINTER SALE BREAKS \$2 MILLION

SOLD \$25,300



SOLD \$6,900



SOLD \$17,250



SOLD \$13,800



SOLD \$11,500



SOLD \$42,550



SOLD \$17,250



SOLD \$6,163



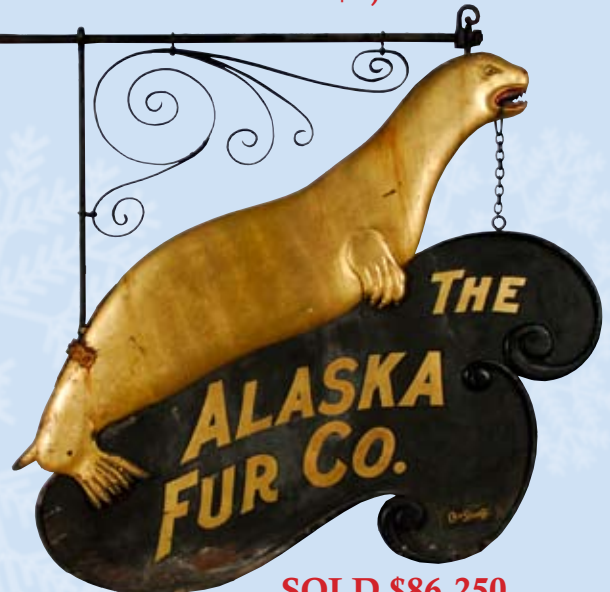
SOLD \$2,588



SOLD \$12,650



SOLD \$10,350



SOLD \$86,250

PRICES* REALIZED AT MORPHY AUCTIONS DECEMBER 6, 7 & 8, 2007

**Prices include a 15% buyers premium. No sales tax included.*

1	\$173	59	\$115	117	\$6,900	175	\$460	233	\$29	291	\$259	349	\$748	407	\$259
2	\$29	60	\$115	118	\$920	176	\$86	234	\$115	292	\$690	350	\$863	408	\$690
3	\$58	61	\$288	119	\$748	177	\$86	235	\$259	293	\$633	351	\$144	409	\$288
4	\$115	62	\$230	120	\$633	178	\$86	236	\$144	294	\$3,738	352	\$86	410	\$259
5	\$29	63	\$29	121	\$460	179	\$58	237	\$29	295	\$748	353	\$144	411	\$201
6	\$58	64	\$173	122	\$460	180	\$58	238	\$316	296	\$690	354	\$144	412	\$403
7	\$58	65	\$288	123	\$518	181	\$58	239	\$805	297	\$575	355	\$403	413	\$460
8	\$58	66	\$805	124	\$345	182	\$29	240	\$259	298	\$288	356	\$259	414	\$288
9	\$403	67	\$748	125	\$1,725	183	\$29	241	\$316	299	\$259	357	\$144	415	\$633
10	\$1,265	68	\$633	126	\$518	184	\$58	242	\$403	300	\$633	358	\$86	416	\$403
11	\$2,300	69	\$575	127	\$230	185	\$86	243	\$575	301	\$115	359	\$29	417	\$863
12	\$17,250	70	\$403	128	\$288	186	\$144	244	\$1,150	302	\$115	360	\$58	418	\$920
13	\$690	71	\$805	129	\$288	187	\$58	245	\$173	303	\$58	361	\$805	419	\$1,035
14	\$920	72	\$201	130	\$863	188	\$86	246	\$403	304	\$86	362	\$86	420	\$201
15	\$863	73	\$288	131	\$173	189	\$144	247	\$259	305	\$29	363	\$86	421	\$144
16	\$2,875	74	\$259	132	\$460	190	\$259	248	\$460	306	\$173	364	\$29	422	\$58
17	\$2,185	75	\$3,163	133	\$805	191	\$173	249	\$144	307	\$144	365	\$144	423	\$29
18	\$288	76	\$863	134	\$144	192	\$518	250	\$144	308	\$58	366	\$115	424	\$230
19	\$1,438	77	\$29	135	\$1,380	193	\$690	251	\$86	309	\$86	367	\$86	425	\$259
20	\$1,840	78	\$86	136	\$2,300	194	\$1,840	252	\$115	310	\$173	368	\$144	426	\$2,300
21	\$115	79	\$0	137	\$4,600	195	\$863	253	\$115	311	\$58	369	\$259	427	\$259
22	\$345	80	\$288	138	\$58	196	\$201	254	\$86	312	\$115	370	\$4,313	428	\$115
23	\$460	81	\$173	139	\$230	197	\$230	255	\$58	313	\$115	371	\$2,588	429	\$115
24	\$58	82	\$345	140	\$403	198	\$575	256	\$58	314	\$58	372	\$144	430	\$259
25	\$1,840	83	\$201	141	\$86	199	\$288	257	\$29	315	\$259	373	\$115	431	\$1,035
26	\$58	84	\$288	142	\$230	200	\$86	258	\$58	316	\$86	374	\$144	432	\$518
27	\$115	85	\$288	143	\$2,588	201	\$86	259	\$23	317	\$173	375	\$144	433	\$1,150
28	\$0	86	\$288	144	\$374	202	\$115	260	\$58	318	\$403	376	\$86	434	\$863
29	\$0	87	\$345	145	\$460	203	\$288	261	\$144	319	\$1,380	377	\$86	435	\$1,610
30	\$748	88	\$288	146	\$288	204	\$58	262	\$115	320	\$4,313	378	\$58	436	\$863
31	\$345	89	\$403	147	\$518	205	\$29	263	\$173	321	\$805	379	\$86	437	\$2,070
32	\$633	90	\$288	148	\$575	206	\$58	264	\$173	322	\$1,495	380	\$316	438	\$748
33	\$575	91	\$690	149	\$345	207	\$58	265	\$316	323	\$144	381	\$316	439	\$748
34	\$403	92	\$920	150	\$115	208	\$115	266	\$575	324	\$201	382	\$460	440	\$3,450
35	\$316	93	\$1,035	151	\$58	209	\$29	267	\$690	325	\$403	383	\$259	441	\$4,025
36	\$403	94	\$345	152	\$115	210	\$115	268	\$690	326	\$144	384	\$288	442	\$2,300
37	\$230	95	\$345	153	\$173	211	\$173	269	\$5,175	327	\$58	385	\$316	443	\$86,250
38	\$575	96	\$345	154	\$58	212	\$29	270	\$1,150	328	\$115	386	\$460	444	\$144
39	\$345	97	\$748	155	\$86	213	\$173	271	\$144	329	\$115	387	\$403	445	\$144
40	\$633	98	\$460	156	\$58	214	\$345	272	\$345	330	\$115	388	\$460	446	\$403
41	\$173	99	\$575	157	\$58	215	\$173	273	\$230	331	\$86	389	\$259	447	\$115
42	\$345	100	\$575	158	\$115	216	\$633	274	\$201	332	\$86	390	\$259	448	\$345
43	\$1,035	101	\$403	159	\$115	217	\$2,588	275	\$259	333	\$58	391	\$259	449	\$403
44	\$345	102	\$345	160	\$115	218	\$2,300	276	\$144	334	\$58	392	\$288	450	\$288
45	\$29	103	\$460	161	\$58	219	\$403	277	\$58	335	\$58	393	\$345	451	\$259
46	\$115	104	\$403	162	\$115	220	\$575	278	\$58	336	\$690	394	\$288	452	\$1,955
47	\$575	105	\$316	163	\$144	221	\$144	279	\$58	337	\$86	395	\$575	453	\$1,150
48	\$288	106	\$1,495	164	\$633	222	\$316	280	\$58	338	\$115	396	\$288	454	\$2,875
49	\$403	107	\$805	165	\$115	223	\$144	281	\$86	339	\$58	397	\$748	455	\$2,300
50	\$173	108	\$259	166	\$173	224	\$460	282	\$29	340	\$58	398	\$345	456	\$2,185
51	\$173	109	\$345	167	\$173	225	\$86	283	\$58	341	\$805	399	\$259	457	\$11,500
52	\$115	110	\$259	168	\$173	226	\$115	284	\$29	342	\$518	400	\$460	458	\$259
53	\$230	111	\$920	169	\$1,093	227	\$58	285	\$173	343	\$173	401	\$633	459	\$173
54	\$230	112	\$460	170	\$748	228	\$86	286	\$259	344	\$316	402	\$230	460	\$460
55	\$230	113	\$1,725	171	\$173	229	\$29	287	\$115	345	\$403	403	\$173	461	\$575
56	\$230	114	\$690	172	\$230	230	\$29	288	\$86	346	\$173	404	\$259	462	\$633
57	\$403	115	\$518	173	\$259	231	\$29	289	\$201	347	\$1,093	405	\$173	463	\$10,350
58	\$288	116	\$460	174	\$633	232	\$86	290	\$201	348	\$5,750	406	\$633	464	\$9,200

LOTS 1 - 464

PRICES* REALIZED AT MORPHY AUCTIONS DECEMBER 6, 7 & 8, 2007

**Prices include a 15% buyers premium. No sales tax included.*

465	\$518	523	\$1,840	581	\$259	639	\$748	698	\$316	810	\$259	868	\$230	926	\$575
466	\$518	524	\$345	582	\$230	640	\$575	699	\$173	811	\$403	869	\$201	927	\$460
467	\$173	525	\$115	583	\$173	641	\$518	700	\$201	812	\$316	870	\$460	928	\$201
468	\$2,875	526	\$259	584	\$201	642	\$690	701	\$3,450	813	\$115	871	\$1,150	929	\$518
469	\$173	527	\$115	585	\$403	643	\$403	702	\$173	814	\$58	872	\$403	930	\$173
470	\$805	528	\$115	586	\$518	644	\$345	703	\$3,450	815	\$173	873	\$575	931	\$230
471	\$8,050	529	\$633	587	\$86	645	\$805	704	\$86	816	\$345	874	\$288	932	\$3,163
472	\$5,175	530	\$86	588	\$201	646	\$920	705	\$3,163	817	\$460	875	\$259	933	\$1,610
473	\$9,200	531	\$58	589	\$173	647	\$805	706	\$259	818	\$345	876	\$230	934	\$920
474	\$2,070	532	\$58	590	\$115	648	\$863	707	\$403	819	\$288	877	\$115	935	\$920
475	\$5,175	533	\$345	591	\$173	649	\$633	708	\$288	820	\$633	878	\$173	936	\$201
476	\$29,900	534	\$288	592	\$1,035	650	\$633	709	\$3,163	821	\$460	879	\$316	937	\$690
477	\$14,950	535	\$86	593	\$115	651	\$690	710	\$230	822	\$1,840	880	\$633	938	\$863
478	\$550	536	\$1,035	594	\$58	652	\$1,035	711	\$1,495	823	\$3,450	881	\$460	939	\$575
479	\$518	537	\$863	595	\$86	653	\$1,955	712	\$1,495	824	\$259	882	\$2,588	940	\$173
480	\$552	538	\$58	596	\$115	654	\$1,093	713	\$173	825	\$230	883	\$2,070	941	\$345
481	\$518	539	\$460	597	\$173	655	\$805	714	\$633	826	\$460	884	\$3,738	942	\$403
482	\$575	540	\$518	598	\$29	656	\$1,150	715	\$1,150	827	\$230	885	\$2,185	943	\$230
483	\$518	541	\$690	599	\$1,495	657	\$345	716	\$345	828	\$518	886	\$3,738	944	\$259
484	\$201	542	\$230	600	\$403	658	\$345	717	\$288	829	\$1,495	887	\$3,163	945	\$403
485	\$173	543	\$575	601	\$920	659	\$633	718	\$1,610	830	\$403	888	\$460	946	\$805
486	\$115	544	\$460	602	\$29	660	\$575	719	\$316	831	\$288	889	\$173	947	\$805
487	\$29	545	\$173	603	\$2,300	661	\$575	720	\$403	832	\$1,495	890	\$230	948	\$748
488	\$29	546	\$173	604	\$1,610	662	\$1,380	721	\$115	833	\$316	891	\$144	949	\$805
489	\$115	547	\$1,150	605	\$5,463	663	\$748	722	\$144	834	\$518	892	\$690	950	\$518
490	\$86	548	\$1,610	606	\$4,025	664	\$518	723	\$115	835	\$460	893	\$518	951	\$1,380
491	\$58	549	\$1,150	607	\$1,265	665	\$575	724	\$86	836	\$460	894	\$920	952	\$518
492	\$58	550	\$259	608	\$518	666	\$518	725	\$29	837	\$345	895	\$518	953	\$748
493	\$58	551	\$58	609	\$115	667	\$403	726	\$115	838	\$633	896	\$403	954	\$748
494	\$29	552	\$259	610	\$1,840	668	\$259	727	\$173	839	\$460	897	\$403	955	\$518
495	\$58	553	\$0	611	\$403	669	\$518	728	\$115	840	\$403	898	\$288	956	\$4,600
496	\$58	554	\$115	612	\$403	670	\$230	729	\$86	841	\$460	899	\$460	957	\$978
497	\$58	555	\$86	613	\$690	671	\$1,265	730	\$115	842	\$690	900	\$748	958	\$230
498	\$58	556	\$58	614	\$1,610	672	\$1,150	731	\$58	843	\$4,313	901	\$403	959	\$690
499	\$58	557	\$144	615	\$3,163	673	\$2,070	732	\$201	844	\$4,025	902	\$230	960	\$748
500	\$58	558	\$1,035	616	\$633	674	\$633	733	\$201	845	\$345	903	\$575	961	\$316
501	\$144	559	\$1,840	617	\$288	675	\$4,600	734	\$259	846	\$2,300	904	\$144	962	\$1,265
502	\$58	560	\$3,738	618	\$1,840	676	\$1,610	735	\$748	847	\$403	905	\$144	963	\$288
503	\$115	561	\$10,350	619	\$3,163	677	\$1,035	736	\$345	848	\$403	906	\$288	964	\$460
504	\$259	562	\$8,050	620	\$1,495	678	\$518	737	\$86	849	\$805	907	\$288	965	\$4,313
505	\$316	563	\$633	621	\$316	680	\$1,380	738	\$173	850	\$575	908	\$316	966	\$575
506	\$58	564	\$9,200	622	\$201	681	\$1,840	739	\$144	851	\$460	909	\$259	967	\$460
507	\$201	565	\$518	623	\$403	682	\$3,163	740	\$345	852	\$288	910	\$144	968	\$805
508	\$29	566	\$115	624	\$978	683	\$9,775	741	\$230	853	\$316	911	\$460	969	\$748
509	\$86	567	\$86	625	\$863	684	\$8,625	742	\$316	854	\$201	912	\$518	970	\$633
510	\$173	568	\$29	626	\$518	685	\$5,175	743	\$259	855	\$259	913	\$748	972	\$690
511	\$575	569	\$460	627	\$1,150	686	\$31,050	744	\$201	856	\$403	914	\$978	973	\$633
512	\$805	570	\$230	628	\$1,035	687	\$1,955	745	\$115	857	\$575	915	\$805	974	\$316
513	\$403	571	\$230	629	\$403	688	\$1,265	800	\$115	858	\$1,150	916	\$518	975	\$288
514	\$230	572	\$259	630	\$345	689	\$1,265	801	\$115	859	\$1,380	917	\$345	976	\$201
515	\$144	573	\$575	631	\$316	690	\$1,150	802	\$1,495	860	\$3,163	918	\$690	977	\$29
516	\$288	574	\$4,888	632	\$403	691	\$42,550	803	\$230	861	\$1,840	919	\$1,150	978	\$259
517	\$403	575	\$259	633	\$1,150	692	\$25,300	804	\$4,025	862	\$1,150	920	\$288	979	\$230
518	\$518	576	\$863	634	\$978	693	\$518	805	\$690	863	\$13,800	921	\$575	980	\$201
519	\$144	577	\$345	635	\$316	694	\$230	806	\$575	864	\$518	922	\$403	981	\$518
520	\$460	578	\$173	636	\$518	695	\$173	807	\$460	865	\$3,738	923	\$1,610	982	\$518
521	\$115	579	\$633	637	\$633	696	\$144	808	\$403	866	\$518	924	\$1,150	983	\$518
522	\$173	580	\$288	638	\$575	697	\$230	809	\$201	867	\$575	925	\$2,300	984	\$518

LOTS 465 - 984

PRICES* REALIZED AT MORPHY AUCTIONS DECEMBER 6, 7 & 8, 2007

**Prices include a 15% buyers premium. No sales tax included.*

985	\$805	1045	\$173	1103	\$690	1161	\$633	1219	\$1,495	1278	\$460	1339	\$316	1398	\$403
986	\$633	1046	\$173	1104	\$690	1162	\$345	1220	\$1,150	1279	\$173	1340	\$403	1399	\$316
987	\$230	1047	\$173	1105	\$805	1163	\$518	1221	\$1,150	1280	\$173	1341	\$460	1400	\$403
988	\$460	1048	\$1,610	1106	\$1,840	1164	\$863	1222	\$201	1281	\$115	1342	\$978	1401	\$460
989	\$633	1049	\$460	1107	\$1,955	1165	\$86	1223	\$345	1282	\$173	1343	\$1,035	1402	\$460
990	\$690	1050	\$115	1108	\$403	1166	\$288	1224	\$173	1283	\$58	1344	\$403	1403	\$345
991	\$575	1051	\$173	1109	\$460	1167	\$403	1225	\$29	1284	\$403	1345	\$201	1404	\$1,035
992	\$863	1052	\$518	1110	\$633	1168	\$115	1226	\$58	1285	\$460	1346	\$345	1405	\$460
993	\$316	1053	\$173	1111	\$230	1169	\$201	1227	\$345	1286	\$230	1347	\$288	1406	\$115
994	\$1,610	1054	\$748	1112	\$863	1170	\$29	1228	\$460	1287	\$201	1348	\$288	1407	\$230
996	\$8,050	1055	\$173	1113	\$633	1171	\$58	1230	\$345	1289	\$345	1349	\$460	1408	\$633
997	\$2,588	1056	\$1,380	1114	\$460	1172	\$29	1231	\$58	1290	\$173	1350	\$518	1410	\$920
998	\$345	1057	\$460	1115	\$345	1173	\$29	1232	\$288	1291	\$173	1351	\$1,725	1411	\$1,725
999	\$259	1058	\$403	1116	\$403	1174	\$115	1233	\$805	1292	\$316	1352	\$1,150	1412	\$316
1000	\$201	1059	\$345	1117	\$1,150	1175	\$58	1234	\$115	1293	\$173	1353	\$403	1413	\$518
1001	\$259	1060	\$403	1118	\$460	1176	\$115	1235	\$518	1294	\$29	1354	\$403	1414	\$115
1002	\$633	1061	\$403	1119	\$58	1177	\$86	1236	\$173	1295	\$173	1355	\$403	1416	\$403
1003	\$460	1062	\$518	1120	\$259	1178	\$144	1237	\$173	1296	\$575	1356	\$230	1417	\$460
1004	\$575	1063	\$403	1121	\$633	1179	\$115	1238	\$201	1297	\$575	1357	\$144	1418	\$690
1005	\$259	1064	\$460	1122	\$259	1180	\$115	1239	\$144	1298	\$575	1358	\$403	1419	\$144
1006	\$345	1065	\$518	1123	\$58	1181	\$86	1240	\$86	1299	\$58	1359	\$2,588	1420	\$575
1007	\$805	1066	\$316	1124	\$86	1182	\$86	1241	\$144	1300	\$863	1360	\$403	1421	\$4,888
1008	\$86	1067	\$201	1125	\$173	1183	\$288	1242	\$58	1301	\$1,150	1361	\$518	1422	\$863
1009	\$575	1068	\$518	1126	\$58	1184	\$58	1243	\$58	1303	\$2,875	1362	\$805	1424	\$1,265
1010	\$518	1069	\$690	1127	\$115	1185	\$86	1244	\$345	1304	\$1,093	1363	\$518	1425	\$3,738
1011	\$345	1070	\$1,610	1128	\$403	1186	\$201	1245	\$518	1305	\$920	1364	\$460	1426	\$173
1012	\$633	1071	\$288	1129	\$288	1187	\$86	1246	\$173	1306	\$86	1365	\$863	1427	\$230
1013	\$460	1072	\$518	1130	\$518	1188	\$403	1247	\$460	1307	\$2,588	1366	\$345	1428	\$316
1014	\$460	1073	\$345	1131	\$1,380	1189	\$403	1248	\$86	1308	\$690	1367	\$690	1429	\$144
1015	\$518	1074	\$920	1132	\$978	1190	\$460	1249	\$29	1310	\$58	1368	\$201	1430	\$460
1016	\$230	1075	\$518	1133	\$575	1191	\$115	1250	\$518	1311	\$86	1370	\$518	1431	\$460
1017	\$403	1076	\$633	1134	\$115	1192	\$345	1251	\$345	1312	\$86	1371	\$259	1432	\$86
1018	\$4,313	1077	\$575	1135	\$58	1193	\$29	1252	\$633	1313	\$201	1372	\$403	1433	\$345
1019	\$460	1078	\$460	1136	\$29	1194	\$144	1253	\$316	1314	\$1,035	1373	\$230	1434	\$316
1020	\$748	1079	\$288	1137	\$201	1195	\$805	1254	\$575	1315	\$288	1374	\$259	1435	\$144
1021	\$460	1080	\$460	1138	\$460	1196	\$115	1255	\$316	1316	\$690	1375	\$288	1436	\$58
1022	\$345	1081	\$345	1139	\$403	1197	\$345	1256	\$403	1317	\$144	1376	\$403	1437	\$460
1023	\$4,025	1082	\$460	1140	\$805	1198	\$403	1257	\$518	1318	\$316	1377	\$316	1438	\$403
1024	\$316	1083	\$1,725	1141	\$115	1199	\$230	1258	\$316	1319	\$403	1378	\$345	1439	\$460
1025	\$633	1084	\$863	1142	\$115	1200	\$201	1259	\$518	1320	\$201	1379	\$748	1440	\$403
1026	\$1,725	1085	\$575	1143	\$690	1201	\$230	1260	\$863	1321	\$144	1380	\$1,380	1441	\$230
1027	\$2,300	1086	\$58	1144	\$805	1202	\$144	1261	\$575	1322	\$201	1381	\$259	1442	\$633
1028	\$805	1087	\$575	1145	\$316	1203	\$86	1262	\$86	1323	\$288	1382	\$403	1443	\$460
1029	\$288	1088	\$3,163	1146	\$403	1204	\$173	1263	\$58	1324	\$144	1383	\$316	1444	\$863
1030	\$920	1089	\$115	1147	\$288	1205	\$575	1264	\$518	1325	\$201	1384	\$690	1445	\$518
1031	\$518	1090	\$1,840	1148	\$978	1206	\$58	1265	\$115	1326	\$173	1385	\$288	1446	\$259
1032	\$5,750	1091	\$518	1149	\$345	1207	\$403	1266	\$201	1327	\$115	1386	\$690	1447	\$460
1033	\$230	1092	\$1,265	1150	\$575	1208	\$345	1267	\$403	1328	\$173	1387	\$288	1448	\$633
1034	\$518	1093	\$345	1151	\$201	1209	\$575	1268	\$115	1329	\$460	1388	\$403	1449	\$1,610
1035	\$144	1094	\$575	1152	\$230	1210	\$288	1269	\$201	1330	\$633	1389	\$460	1450	\$460
1036	\$2,588	1095	\$575	1153	\$2,588	1211	\$173	1270	\$144	1331	\$345	1390	\$403	1451	\$345
1037	\$6,900	1096	\$345	1154	\$403	1212	\$1,035	1271	\$575	1332	\$288	1391	\$748	1452	\$3,450
1038	\$460	1097	\$1,725	1155	\$173	1213	\$805	1272	\$345	1333	\$86	1392	\$316	1453	\$316
1039	\$863	1098	\$748	1156	\$173	1214	\$1,725	1273	\$230	1334	\$403	1393	\$518	1454	\$575
1041	\$201	1099	\$805	1157	\$115	1215	\$288	1274	\$345	1335	\$288	1394	\$316	1455	\$2,070
1042	\$316	1100	\$518	1158	\$201	1216	\$748	1275	\$144	1336	\$345	1395	\$403	1456	\$403
1043	\$633	1101	\$2,070	1159	\$173	1217	\$173	1276	\$201	1337	\$173	1396	\$259	1457	\$1,035
1044	\$259	1102	\$1,150	1160	\$316	1218	\$58	1277	\$173	1338	\$230	1397	\$288	1458	\$3,450

LOTS 985 - 1458

PRICES* REALIZED AT MORPHY AUCTIONS DECEMBER 6, 7 & 8, 2007

**Prices include a 15% buyers premium. No sales tax included.*

1459	\$518	1520	\$575	1578	\$288	1636	\$288	1694	\$518	1753	\$144	1811	\$460	1870	\$575
1460	\$633	1521	\$748	1579	\$690	1637	\$316	1695	\$748	1754	\$259	1812	\$1,093	1871	\$259
1461	\$748	1522	\$230	1580	\$978	1638	\$230	1696	\$3,450	1755	\$403	1813	\$1,380	1872	\$173
1462	\$316	1523	\$920	1581	\$1,093	1639	\$86	1697	\$316	1756	\$201	1814	\$1,610	1873	\$259
1463	\$518	1524	\$144	1582	\$288	1640	\$201	1698	\$403	1757	\$173	1815	\$2,875	1874	\$345
1464	\$173	1525	\$403	1583	\$863	1641	\$403	1699	\$460	1758	\$230	1816	\$690	1875	\$230
1465	\$173	1526	\$920	1584	\$201	1642	\$230	1700	\$4,025	1759	\$86	1817	\$288	1876	\$288
1466	\$345	1527	\$144	1585	\$920	1643	\$690	1701	\$805	1760	\$201	1818	\$58	1877	\$144
1467	\$460	1528	\$173	1586	\$173	1644	\$29	1702	\$575	1761	\$20	1819	\$575	1878	\$173
1468	\$230	1529	\$288	1587	\$144	1645	\$115	1703	\$201	1762	\$633	1820	\$58	1879	\$259
1469	\$288	1530	\$633	1588	\$86	1646	\$144	1704	\$288	1763	\$1,725	1822	\$403	1880	\$201
1470	\$920	1531	\$144	1589	\$86	1647	\$173	1705	\$173	1764	\$2,185	1823	\$575	1881	\$201
1471	\$460	1532	\$403	1590	\$144	1648	\$173	1707	\$460	1765	\$86	1824	\$230	1882	\$316
1472	\$633	1533	\$460	1591	\$115	1649	\$144	1708	\$748	1766	\$920	1825	\$518	1883	\$316
1473	\$690	1534	\$1,495	1592	\$201	1650	\$460	1709	\$748	1767	\$633	1826	\$403	1884	\$259
1474	\$920	1535	\$1,495	1593	\$460	1651	\$4,313	1710	\$633	1768	\$1,610	1827	\$4,025	1885	\$144
1475	\$1,150	1536	\$14,950	1594	\$115	1652	\$403	1711	\$288	1769	\$575	1828	\$58	1886	\$259
1476	\$4,025	1537	\$1,380	1595	\$173	1653	\$259	1712	\$259	1770	\$115	1829	\$144	1887	\$173
1477	\$748	1538	\$805	1596	\$86	1654	\$345	1713	\$144	1771	\$288	1830	\$230	1888	\$86
1479	\$86	1539	\$690	1597	\$173	1655	\$144	1714	\$259	1772	\$2,070	1831	\$460	1889	\$230
1480	\$230	1540	\$633	1598	\$288	1656	\$0	1715	\$633	1773	\$345	1832	\$115	1890	\$230
1481	\$633	1541	\$863	1599	\$144	1657	\$403	1716	\$460	1774	\$173	1833	\$575	1891	\$518
1482	\$575	1542	\$403	1600	\$345	1658	\$58	1717	\$518	1775	\$460	1834	\$345	1892	\$345
1483	\$518	1543	\$575	1601	\$173	1659	\$403	1718	\$920	1776	\$863	1835	\$173	1893	\$748
1484	\$316	1544	\$3,450	1602	\$201	1660	\$144	1719	\$230	1777	\$345	1836	\$3,738	1894	\$345
1485	\$575	1545	\$2,185	1603	\$115	1661	\$29	1720	\$345	1778	\$1,035	1837	\$4,313	1895	\$316
1486	\$575	1546	\$575	1604	\$201	1662	\$86	1721	\$86	1779	\$460	1838	\$6,900	1896	\$920
1487	\$86	1547	\$316	1605	\$173	1663	\$86	1722	\$86	1780	\$1,035	1839	\$25,300	1897	\$259
1488	\$316	1548	\$1,380	1606	\$173	1664	\$259	1723	\$115	1781	\$690	1840	\$115	1898	\$86
1489	\$403	1549	\$518	1607	\$173	1665	\$230	1724	\$115	1782	\$144	1841	\$144	1899	\$403
1490	\$518	1550	\$288	1608	\$201	1666	\$29	1725	\$58	1783	\$230	1842	\$173	1900	\$230
1491	\$690	1551	\$2,070	1609	\$345	1667	\$115	1726	\$86	1784	\$805	1843	\$288	1901	\$201
1492	\$144	1552	\$403	1610	\$288	1668	\$115	1727	\$86	1785	\$403	1844	\$201	1902	\$345
1493	\$575	1553	\$201	1611	\$201	1669	\$316	1728	\$86	1786	\$316	1845	\$230	1903	\$690
1494	\$201	1554	\$345	1612	\$230	1670	\$1,265	1729	\$115	1787	\$86	1846	\$230	1904	\$403
1495	\$345	1555	\$403	1613	\$259	1671	\$29	1730	\$144	1788	\$6,325	1847	\$518	1905	\$1,265
1496	\$460	1556	\$86	1614	\$201	1672	\$115	1731	\$460	1789	\$1,035	1848	\$144	1906	\$115
1497	\$144	1557	\$978	1615	\$345	1673	\$86	1732	\$805	1790	\$403	1849	\$230	1907	\$115
1500	\$144	1558	\$1,150	1616	\$518	1674	\$58	1733	\$10,350	1791	\$201	1850	\$58	1908	\$173
1501	\$58	1559	\$1,035	1617	\$690	1675	\$345	1734	\$316	1792	\$690	1851	\$115	1909	\$230
1502	\$86	1560	\$633	1618	\$316	1676	\$201	1735	\$460	1793	\$633	1852	\$230	1910	\$115
1503	\$86	1561	\$1,265	1619	\$460	1677	\$86	1736	\$259	1794	\$748	1853	\$259	1911	\$86
1504	\$58	1562	\$4,025	1620	\$748	1678	\$173	1737	\$86	1795	\$518	1854	\$259	1912	\$115
1505	\$460	1563	\$748	1621	\$575	1679	\$173	1738	\$259	1796	\$1,265	1855	\$518	1913	\$460
1506	\$115	1564	\$518	1622	\$2,300	1680	\$230	1739	\$115	1797	\$17,250	1856	\$316	1914	\$920
1507	\$144	1565	\$3,450	1623	\$2,300	1681	\$173	1740	\$230	1798	\$460	1857	\$748	1915	\$690
1508	\$115	1566	\$345	1624	\$633	1682	\$460	1741	\$316	1799	\$863	1858	\$115	1916	\$805
1509	\$173	1567	\$1,380	1625	\$345	1683	\$115	1742	\$460	1800	\$690	1859	\$115	1917	\$518
1510	\$201	1568	\$345	1626	\$259	1684	\$316	1743	\$230	1801	\$288	1860	\$690	1918	\$1,035
1511	\$86	1569	\$690	1627	\$1,955	1685	\$345	1744	\$144	1802	\$748	1861	\$2,875	1919	\$230
1512	\$86	1570	\$518	1628	\$1,840	1686	\$259	1745	\$86	1803	\$2,875	1862	\$288	1920	\$288
1513	\$230	1571	\$86	1629	\$288	1687	\$144	1746	\$690	1804	\$690	1863	\$259	1921	\$748
1514	\$86	1572	\$288	1630	\$863	1688	\$144	1747	\$460	1805	\$690	1864	\$173	1922	\$115
1515	\$173	1573	\$173	1631	\$518	1689	\$345	1748	\$345	1806	\$1,093	1865	\$144	1923	\$201
1516	\$115	1574	\$230	1632	\$345	1690	\$144	1749	\$978	1807	\$8,050	1866	\$460	1924	\$144
1517	\$259	1575	\$230	1633	\$403	1691	\$863	1750	\$230	1808	\$259	1867	\$144	1925	\$288
1518	\$201	1576	\$1,150	1634	\$201	1692	\$518	1751	\$920	1809	\$345	1868	\$230	1926	\$403
1519	\$518	1577	\$173	1635	\$345	1693	\$575	1752	\$460	1810	\$316	1869	\$288	1927	\$460

LOTS 1459 - 1927

PRICES* REALIZED AT MORPHY AUCTIONS DECEMBER 6, 7 & 8, 2007

**Prices include a 15% buyers premium. No sales tax included.*

1928	\$173	1987	\$201	2045	\$748	2103	\$1,035	2163	\$2,588	2221	\$1,265	2279	\$230	2337	\$460
1929	\$259	1988	\$288	2046	\$403	2104	\$9,775	2164	\$805	2222	\$2,185	2280	\$518	2338	\$2,070
1930	\$575	1989	\$144	2047	\$403	2105	\$633	2165	\$403	2223	\$748	2281	\$690	2339	\$1,955
1931	\$1,265	1990	\$403	2048	\$345	2106	\$690	2166	\$173	2224	\$690	2282	\$863	2340	\$6,900
1932	\$115	1991	\$230	2049	\$633	2107	\$690	2167	\$1,955	2225	\$863	2283	\$575	2341	\$1,150
1933	\$460	1992	\$345	2050	\$201	2108	\$863	2168	\$2,875	2226	\$1,150	2284	\$690	2342	\$58
1934	\$115	1993	\$403	2051	\$460	2109	\$1,035	2169	\$805	2227	\$978	2285	\$9,775	2343	\$58
1935	\$115	1994	\$403	2052	\$575	2110	\$518	2170	\$1,725	2228	\$978	2286	\$86	2344	\$1,725
1936	\$633	1995	\$805	2053	\$288	2111	\$575	2171	\$1,150	2229	\$920	2287	\$2,070	2345	\$690
1937	\$460	1996	\$518	2054	\$144	2112	\$259	2172	\$2,185	2230	\$978	2288	\$1,495	2346	\$5,175
1938	\$403	1997	\$230	2055	\$863	2113	\$978	2173	\$1,840	2231	\$1,265	2289	\$978	2347	\$173
1939	\$748	1998	\$345	2056	\$575	2114	\$1,150	2174	\$1,840	2232	\$748	2290	\$288	2348	\$2,300
1940	\$460	1999	\$345	2057	\$2,300	2115	\$575	2175	\$6,325	2233	\$978	2291	\$3,738	2349	\$518
1941	\$403	2000	\$575	2058	\$144	2117	\$1,265	2176	\$1,610	2234	\$748	2292	\$1,955	2350	\$920
1942	\$748	2001	\$403	2059	\$201	2118	\$978	2177	\$748	2235	\$575	2293	\$403	2351	\$19,550
1943	\$2,875	2002	\$316	2060	\$201	2119	\$1,955	2178	\$1,495	2236	\$1,035	2294	\$748	2352	\$8,050
1944	\$12,650	2003	\$316	2061	\$230	2121	\$1,380	2179	\$748	2237	\$805	2295	\$345	2353	\$863
1945	\$460	2004	\$288	2062	\$173	2122	\$1,093	2180	\$1,610	2238	\$748	2296	\$1,093	2354	\$748
1946	\$403	2005	\$518	2063	\$345	2123	\$1,265	2181	\$1,150	2239	\$3,163	2297	\$1,265	2355	\$5,750
1947	\$1,150	2006	\$288	2064	\$403	2124	\$575	2182	\$1,955	2240	\$863	2298	\$2,875	2356	\$14,950
1948	\$2,300	2007	\$1,093	2065	\$259	2125	\$575	2183	\$403	2241	\$288	2299	\$920	2357	\$863
1949	\$633	2008	\$690	2066	\$403	2126	\$978	2184	\$1,265	2242	\$805	2300	\$1,035	2358	\$920
1950	\$575	2009	\$518	2067	\$403	2127	\$1,380	2185	\$690	2243	\$316	2301	\$6,325	2359	\$1,840
1951	\$144	2010	\$748	2068	\$460	2128	\$6,325	2186	\$1,840	2244	\$518	2302	\$863	2360	\$2,300
1952	\$518	2011	\$633	2069	\$518	2129	\$17,250	2187	\$259	2245	\$518	2303	\$748	2361	\$2,070
1953	\$460	2012	\$978	2070	\$1,725	2130	\$920	2188	\$978	2246	\$173	2304	\$1,265	2362	\$2,875
1954	\$1,495	2013	\$403	2071	\$805	2131	\$805	2189	\$1,093	2247	\$863	2305	\$1,150	2363	\$2,588
1955	\$288	2014	\$518	2072	\$920	2132	\$1,955	2190	\$3,450	2248	\$345	2306	\$173	2364	\$6,325
1956	\$259	2015	\$345	2073	\$518	2133	\$518	2191	\$10,350	2249	\$575	2307	\$633	2365	\$1,955
1957	\$230	2016	\$633	2074	\$518	2134	\$863	2192	\$2,875	2250	\$748	2308	\$1,610	2366	\$3,738
1958	\$144	2017	\$575	2075	\$460	2135	\$201	2193	\$2,875	2251	\$230	2309	\$920	2367	\$460
1959	\$690	2018	\$518	2076	\$460	2136	\$1,093	2194	\$1,840	2252	\$518	2310	\$2,588	2368	\$316
1960	\$201	2019	\$920	2077	\$230	2137	\$1,265	2195	\$2,875	2253	\$259	2311	\$403	2369	\$29
1961	\$633	2020	\$2,070	2078	\$460	2138	\$1,035	2196	\$3,450	2254	\$403	2312	\$748	2370	\$115
1962	\$288	2021	\$403	2079	\$518	2139	\$1,265	2197	\$1,150	2255	\$4,313	2313	\$748	2371	\$2,875
1963	\$3,450	2022	\$201	2080	\$230	2140	\$1,725	2198	\$5,175	2256	\$230	2314	\$5,750	2372	\$403
1964	\$230	2023	\$201	2081	\$1,265	2141	\$1,840	2199	\$4,313	2257	\$316	2315	\$2,185	2373	\$345
1965	\$575	2024	\$805	2082	\$316	2142	\$690	2200	\$12,650	2258	\$863	2316	\$920	2374	\$345
1967	\$4,025	2025	\$345	2083	\$1,093	2143	\$2,588	2201	\$18,400	2259	\$6,900	2317	\$633	2375	\$690
1968	\$460	2026	\$201	2084	\$2,070	2144	\$1,955	2202	\$6,900	2260	\$633	2318	\$345	2376	\$748
1969	\$1,150	2027	\$288	2085	\$2,300	2145	\$1,495	2203	\$2,070	2261	\$259	2319	\$805	2377	\$805
1970	\$805	2028	\$518	2086	\$345	2146	\$2,070	2204	\$403	2262	\$1,035	2320	\$805	2378	\$4,600
1971	\$863	2029	\$173	2087	\$288	2147	\$115	2205	\$575	2263	\$1,265	2321	\$403	2379	\$863
1972	\$1,380	2030	\$805	2088	\$1,495	2148	\$2,588	2206	\$575	2264	\$863	2322	\$1,265	2380	\$5,175
1973	\$690	2031	\$115	2089	\$2,185	2149	\$1,725	2207	\$920	2265	\$2,588	2323	\$4,025	2381	\$1,495
1974	\$1,840	2032	\$230	2090	\$575	2150	\$1,955	2208	\$1,610	2266	\$863	2324	\$1,380	2382	\$1,495
1975	\$144	2033	\$1,150	2091	\$173	2151	\$316	2209	\$518	2267	\$805	2325	\$2,588	2383	\$1,610
1976	\$690	2034	\$575	2092	\$978	2152	\$403	2210	\$518	2268	\$978	2326	\$690	1303a	\$1,610
1977	\$460	2035	\$316	2093	\$288	2153	\$1,150	2211	\$144	2269	\$633	2327	\$173	1313a	\$173
1978	\$288	2036	\$1,035	2094	\$1,093	2154	\$863	2212	\$978	2270	\$805	2328	\$6,900	1354A	\$1,380
1979	\$518	2037	\$518	2095	\$748	2155	\$1,610	2213	\$201	2271	\$1,380	2329	\$575	1383a	\$230
1980	\$518	2038	\$575	2096	\$1,035	2156	\$1,150	2214	\$575	2272	\$1,093	2330	\$230	1392a	\$518
1981	\$230	2039	\$518	2097	\$201	2157	\$978	2215	\$316	2273	\$259	2331	\$259	1410a	\$518
1982	\$978	2040	\$1,265	2098	\$403	2158	\$2,588	2216	\$518	2274	\$863	2332	\$1,093	1448a	\$288
1983	\$518	2041	\$460	2099	\$805	2159	\$2,300	2217	\$1,380	2275	\$748	2333	\$2,875	1742a	\$115
1984	\$518	2042	\$1,840	2100	\$173	2160	\$863	2218	\$460	2276	\$316	2334	\$86	1931a	\$1,610
1985	\$316	2043	\$460	2101	\$575	2161	\$9,200	2219	\$633	2277	\$633	2335	\$518	1962a	\$230
1986	\$144	2044	\$575	2102	\$115	2162	\$1,955	2220	\$316	2278	\$920	2336	\$230	2111a	\$403

LOTS 1929 - 2111A